

PARKING PREVENTION ROAD CLOSURE - STORMWATER WORKS STAGES 7 & 8 - PHASE 1



NOTES:

1. ALL SIGNAGE TO BE INSTALLED IN ACCORDANCE WITH RMS "TRAFFIC CONTROL AT WORKSITES" MANUAL AND AS1742.3.
2. ALL SIGNAGE AND DELINEATION MUST BE INSTALLED BY RMS CERTIFIED TRAFFIC CONTROLLER(S) ONLY.
3. SURROUNDING PROPERTY ACCESS TO BE MAINTAINED.
4. TRAFFIC LANES MAINTAINED AS PER NORMAL CONDITIONS.
5. PARKING SPACES REMOVED 24 HOURS BEFORE CLOSURE AND BETWEEN SHIFTS TO ENSURE WORKS CAN PROCEED EACH DAY.
6. PARKING PREVENTION IMPLEMENTED AS PART OF THE ROAD CLOSURE TRAFFIC MANAGEMENT PLAN SBMG01789-100.

LEGEND:

- TRAFFIC FLOW
- PARKING REMOVED
- DELINEATION (i.e. TRAFFIC CONES)
- PEDESTRIAN ROUTE

RECOMMENDED MAXIMUM SPACING OF CONES AND BOLLARDS		RECOMMENDED TAPE LENGTHS	
Purpose an usage	Approach Speed (km/h)	Max Spacing (m)	Approach Speed (km/h)
All purposes on residential or commercial streets	<=50	4	Approach
Center-line on approach to Traffic Controller position	51-70 / 70	4	Lateral shift at start
Outer edge of traffic lane - i.e. working on shoulder	51-70 / 70	18 / 24	Lateral shift
Separating opposing traffic on 2 lane 2 way road	51-70 / 70	12 / 18	0
Separating opposing traffic on a multilane undivided road	51-70 / 70	12 / 18	15
adjacent to a closed lane on a multilane road	51-70 / 70	18 / 24	30
Merge tapers	51-70 / 70	9 / 12	60
Lateral shift tapers	51-70 / 70	12 / 18	70
Protecting freshly painted lines	51-70 / 70	24 / 60	115
FIGURES EXTRACTED FROM RMS TOWNSMANUAL 4.0 / TABLES 5.1 & 5.2. REFER TO MANUAL FOR FURTHER INFO	51-70 / 70	24 / 60	130
			145
			160
			180

DATE	DESCRIPTION
E	
D	
C	
B	
A	INITIAL SUBMISSION

PREPARED BY: MATTHEW YOUNG
 RMS PREPARE A WORKZONE
 TRAFFIC MANAGEMENT PLAN
 CERTIFICATE NO. 0057176886

SIGNED:

Project/Event:	THE PEMULWUY PRECINCT
Location:	EVELEIGH STREET, REDFERN NSW
Client:	DEICORP CONSTRUCTIONS PTY LTD
Plan No.	SBMG01789-101
Date:	19TH FEBRUARY 2020

SCALE: NOT TO SCALE

SBMG PLANNING
 A BUILT FOR CONSTRUCTION COMPANY
 www.sbmpplanning.com.au
 matt@sbmpplanning.com.au
 m: 0487 370 380

TRAFFIC CONTROL PLAN

ROAD CLOSURE - STORMWATER WORKS

STAGES 7 & 8 - PHASE 1



- LEGEND:**
- TRAFFIC FLOW
 - SITE BOUNDARY
 - WORK AREA
 - DELINEATION (i.e. TRAFFIC CONES)
 - PEDESTRIAN BARRIER
 - PEDESTRIAN ROUTE
 - TRAFFIC CONTROLLER

- NOTES:**
- ALL SIGNAGE TO BE INSTALLED IN ACCORDANCE WITH RMS "TRAFFIC CONTROL AT WORKSITES" MANUAL AND AS1742.3.
 - ALL SIGNAGE AND DELINEATION MUST BE INSTALLED BY RMS CERTIFIED TRAFFIC CONTROLLER(S) ONLY.
 - PEDESTRIAN ACCESS TO SURROUNDING PROPERTIES TO BE MAINTAINED AT ALL TIMES.
 - TRAFFIC CONTROLLERS TO ASSIST PEDESTRIANS AROUND CLOSURE AS REQUIRED.
 - ROAD TO BE REOPENED EACH NIGHT WITH STEEL PLATES INSTALLED OVER ANY EXCAVATION AREA TO RESTORE EXISTING ACCESS.
 - TRAFFIC CONTROL SIGNAGE AND DEVICES TO BE COVERED OR REMOVED WHEN NOT IN USE.

DATE	DESCRIPTION
E	
D	
C	
B	
A	INITIAL SUBMISSION

PREPARED BY: MATTHEW YOUNG
 RMS PREPARE A WORKZONE
 TRAFFIC MANAGEMENT PLAN
 CERTIFICATE NO. 0057178896

SIGNED:

Project/Event:	THE PEMULWUY PRECINCT
Location:	EVELEIGH STREET, REDFERN NSW
Client:	DEICORP
Plan No.	SBMG07789-102
Date:	19TH FEBRUARY 2020

SCALE: NOT TO SCALE

SBMG PLANNING

SBMG Pty Ltd
 ABN: 34 167 865 560
 www.sbmginforming.com.au
 matt@sbmginforming.com.au
 m: 0467 370 380

TRAFFIC CONTROL
 CONSTRUCTION
 SOCIAL ENGINEERING

DETOUR OVERVIEW PLAN

ROAD CLOSURE - STORMWATER WORKS

STAGES 7 & 8 - PHASE 1



NOTES:

1. ALL SIGNAGE TO BE INSTALLED IN ACCORDANCE WITH RMS "TRAFFIC CONTROL AT WORKSITES" MANUAL AND AS1742.3.
2. ALL SIGNAGE AND DELINEATION MUST BE INSTALLED BY RMS CERTIFIED TRAFFIC CONTROLLER(S) ONLY.
3. DETOUR PLAN TO BE INSTALLED IN CONJUNCTION WITH THE TRAFFIC CONTROL PLAN SBMG01789-102.
4. DETOUR SIGNAGE COVERED / REMOVED WHEN NOT IN USE.

DATE	DESCRIPTION
E	
D	
C	
B	
A	INITIAL SUBMISSION

PREPARED BY: MATTHEW YOUNG
 RMS PREPARE A WORKZONE
 TRAFFIC MANAGEMENT PLAN
 CERTIFICATE NO. 0057178986

SIGNED:

Project/Event:	THE PEMULWUY PRECINCT
Location:	EVELEIGH STREET, REDFERN NSW
Client:	DEICORP
Plan No.	SBMG01789-103
Date:	19TH FEBRUARY 2020

SBMG Pty Ltd ABN: 34 167 865 560 www.sbmginforming.com.au matt@sbmginforming.com.au m: 0467 370 380	
---	--

SCALE: NOT TO SCALE

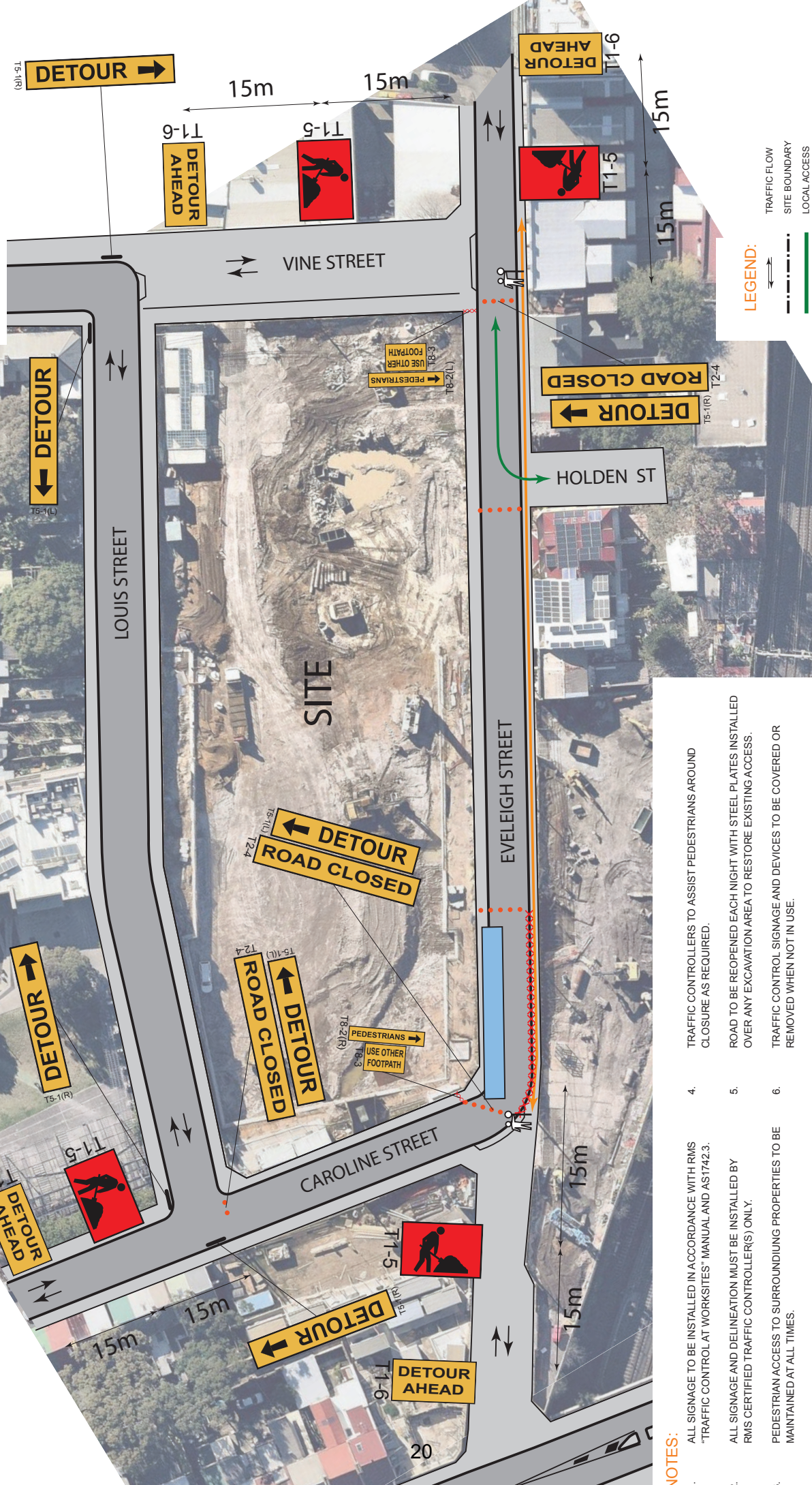
SBMG PLANNING

TRAFFIC CONTROL
 SIGNAGE
 DELINEATION
 WORKZONES

TRAFFIC CONTROL PLAN

ROAD CLOSURE - STORMWATER WORKS

STAGES 7 & 8 - PHASE 2



- NOTES:**
- ALL SIGNAGE TO BE INSTALLED IN ACCORDANCE WITH RMS "TRAFFIC CONTROL AT WORKSITES" MANUAL AND AS1742.3.
 - ALL SIGNAGE AND DELINEATION MUST BE INSTALLED BY RMS CERTIFIED TRAFFIC CONTROLLER(S) ONLY.
 - PEDESTRIAN ACCESS TO SURROUNDING PROPERTIES TO BE MAINTAINED AT ALL TIMES.
 - TRAFFIC CONTROLLERS TO ASSIST PEDESTRIANS AROUND CLOSURE AS REQUIRED.
 - ROAD TO BE REOPENED EACH NIGHT WITH STEEL PLATES INSTALLED OVER ANY EXCAVATION AREA TO RESTORE EXISTING ACCESS.
 - TRAFFIC CONTROL SIGNAGE AND DEVICES TO BE COVERED OR REMOVED WHEN NOT IN USE.

DATE	DESCRIPTION
E	
D	
C	
B	
A	INITIAL SUBMISSION

PREPARED BY: MATTHEW YOUNG
 RMS PREPARE A WORKZONE
 TRAFFIC MANAGEMENT PLAN
 CERTIFICATE NO. 0057178886

SIGNED:

Project/Event:	THE PEMULWUY PRECINCT
Location:	EVELEIGH STREET, REDFERN NSW
Client:	DEICORP
Plan No.	SBMG07789-104
Date:	19TH FEBRUARY 2020

SCALE: NOT TO SCALE

SBMG Pty Ltd
 ABN: 34 167 165 560
 www.sbmgplanning.com.au
 matt@sbmgplanning.com.au
 m: 0467 370 380

TRAFFIC CONTROL
 WORKZONES
 CONSTRUCTION

DETOUR OVERVIEW PLAN

ROAD CLOSURE - STORMWATER WORKS

STAGES 7 & 8 - PHASE 2



NOTES:

1. ALL SIGNAGE TO BE INSTALLED IN ACCORDANCE WITH RMS "TRAFFIC CONTROL AT WORKSITES" MANUAL AND AS1742.3.
2. ALL SIGNAGE AND DELINEATION MUST BE INSTALLED BY RMS CERTIFIED TRAFFIC CONTROLLER(S) ONLY.
3. DETOUR PLAN TO BE INSTALLED IN CONJUNCTION WITH THE TRAFFIC CONTROL PLAN SBMG01789-104.
4. DETOUR SIGNAGE COVERED / REMOVED WHEN NOT IN USE.

DATE	DESCRIPTION
E	
D	
C	
B	
A	INITIAL SUBMISSION

PREPARED BY: MATTHEW YOUNG
 RMS PREPARE A WORKZONE
 TRAFFIC MANAGEMENT PLAN
 CERTIFICATE NO. 0057178986

SIGNED:

Project/Event:	THE PEMULWUY PRECINCT
Location:	EVEHIGH STREET, REDFERN NSW
Client:	DEICORP
Plan No.	SBMG01789-105
Date:	19TH FEBRUARY 2020

SBMG Pty Ltd ABN: 34 167 865 560 www.sbmplanning.com.au matt@sbmplanning.com.au m: 0467 370 380	
---	--

SCALE: NOT TO SCALE

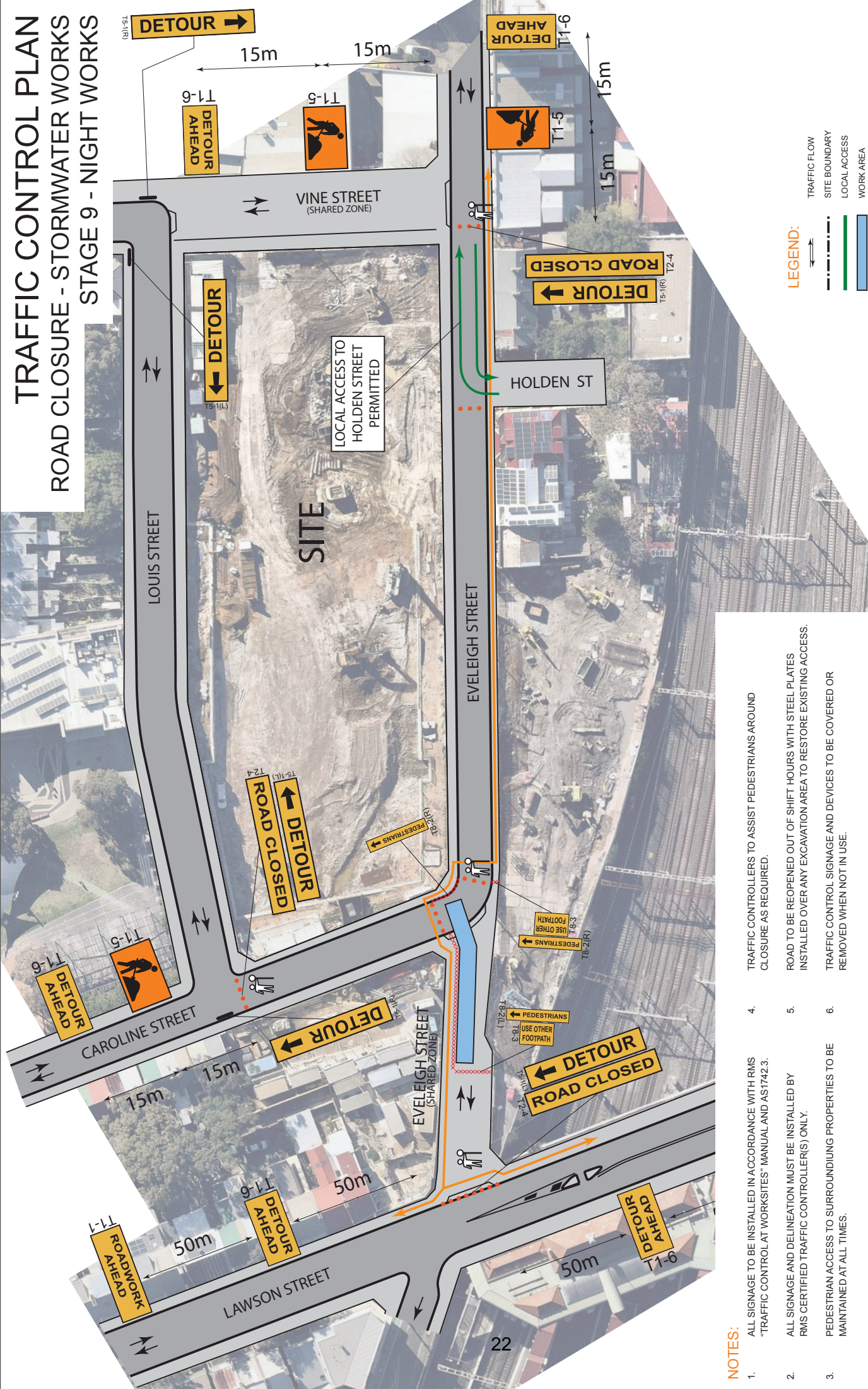
SBMG PLANNING

TRAFFIC CONTROL WORKSITES

TRAFFIC CONTROL PLAN

ROAD CLOSURE - STORMWATER WORKS

STAGE 9 - NIGHT WORKS



- LEGEND:**
- TRAFFIC FLOW
 - SITE BOUNDARY
 - LOCAL ACCESS
 - WORK AREA
 - DELINEATION (i.e. TRAFFIC CONES)
 - PEDESTRIAN BARRIER
 - PEDESTRIAN ROUTE
 - TRAFFIC CONTROLLER

- NOTES:**
- ALL SIGNAGE TO BE INSTALLED IN ACCORDANCE WITH RMS "TRAFFIC CONTROL AT WORKSITES" MANUAL AND AS1742.3.
 - ALL SIGNAGE AND DELINEATION MUST BE INSTALLED BY RMS CERTIFIED TRAFFIC CONTROLLER(S) ONLY.
 - PEDESTRIAN ACCESS TO SURROUNDING PROPERTIES TO BE MAINTAINED AT ALL TIMES.
 - TRAFFIC CONTROLLERS TO ASSIST PEDESTRIANS AROUND CLOSURE AS REQUIRED.
 - ROAD TO BE REOPENED OUT OF SHIFT HOURS WITH STEEL PLATES INSTALLED OVER ANY EXCAVATION AREA TO RESTORE EXISTING ACCESS.
 - TRAFFIC CONTROL SIGNAGE AND DEVICES TO BE COVERED OR REMOVED WHEN NOT IN USE.

DATE	DESCRIPTION
E	
D	
C	
B	
A	INITIAL SUBMISSION

PREPARED BY: MATTHEW YOUNG
 RMS PREPARE A WORKZONE
 TRAFFIC MANAGEMENT PLAN
 CERTIFICATE NO. 0057178886

SIGNED:

Project/Event:	THE PEMULWUY PRECINCT
Location:	EVELEIGH STREET, REDFERN NSW
Client:	DEICORP
Plan No.	SBMG07789-106
Date:	19TH FEBRUARY 2020

SCALE: NOT TO SCALE

SBMG PLANNING

SBMG Pty Ltd
 ABN: 34 167 865 560
 www.sbmginforming.com.au
 matt@sbmginforming.com.au
 m: 0467 370 380

TRAFFIC CONTROL
 WORKZONES
 SIGNAGE
 DELINEATION

DETOUR OVERVIEW PLAN

ROAD CLOSURE - STORMWATER WORKS

STAGE 9 - NIGHT WORKS

- █ WORK AREA
- █ LIMIT OF ROAD CLOSURE
- ← NORTHBOUND DETOUR
- SOUTHBOUND DETOUR
- ↔ HOLDEN ST LOCAL ACCESS



NOTES:

1. ALL SIGNAGE TO BE INSTALLED IN ACCORDANCE WITH RMS "TRAFFIC CONTROL AT WORKSITES" MANUAL AND AS1742.3.
2. ALL SIGNAGE AND DELINEATION MUST BE INSTALLED BY RMS CERTIFIED TRAFFIC CONTROLLER(S) ONLY.
3. DETOUR PLAN TO BE INSTALLED IN CONJUNCTION WITH THE TRAFFIC CONTROL PLAN SBMG01789-106.
4. DETOUR SIGNAGE COVERED / REMOVED WHEN NOT IN USE.

Project/Event: THE PEMULWUY PRECINCT		DATE		DESCRIPTION	
Location: EVELEIGH STREET, REDFERN NSW		19/02/20		E	
Client: DEICORP				D	
Plan No. SBMG01789-107		A		C	
Date: 19TH FEBRUARY 2020				B	
SCALE: NOT TO SCALE				A	
SBMG Pty Ltd ABN: 34 187 165 560 www.sbmginforming.com.au matt@sbmginforming.com.au m: 0487 370 380		PREPARED BY: MATTHEW YOUNG RMS PREPARE A WORKZONE TRAFFIC MANAGEMENT PLAN CERTIFICATE NO. 005718896		SIGNED:	